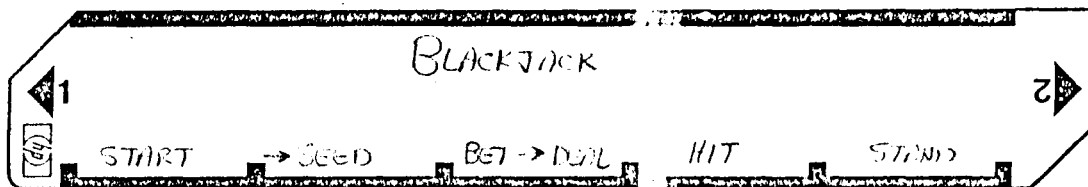


User Instructions



City _____

Program Description, Equations, Variables, etc.

Plus Las Vegas Blackjack

YOU START WITH A \$100 STAKE. BETS CAN BE ANY POSITIVE NUMBER OF DOLLARS. YOUR STAKE IS ALLOWED TO GO NEGATIVE, BUT OF COURSE ANY LOANS MUST BE REPAYED WHEN YOU QUIT.

START - INITIALIZES YOUR STAKE AT \$100.

SEED - IF YOU DON'T INPUT A NUMBER, THE DEFAULT DECK IS DEALT. A NUMBER INPUT WILL SELECT A NEW DECK AT ANY TIME DESIRED. ONLY THE FRACTIONAL PART OF THE INPUT SEED IS USED TO SELECT A DECK OF CARDS.

BET - PLACE YOUR BET, AND YOU WILL GET TWO CARDS. CARDS ARE DISPLAYED AS FOLLOWS:

ACE → 01

2-9 → 02 → 09

10, J, Q, K → 10

HIT - IF YOU WANT ANOTHER CARD. BUST (>21) WILL CAUSE FLASHING 0.

STAND - IF YOU DON'T. DEALER WILL PLAY AUTOMATICALLY, AND MUST HIT ON 16 OR LESS AND STAND ON 17 OR MORE. AFTER DEALER STANDS, SCORES WILL BE DISPLAYED IN FORM "YOURS. DEALER". THEN YOUR BET WILL BE ADDED OR SUBTRACTED FROM YOUR STAKE AND THE NEW STAKE DISPLAYED. A NEW HAND CAN BE PLAYED BY PLACING A NEW BET.

ACES CAN COUNT EITHER AS 1 OR 11. PROGRAM COUNTS THEM AS 11 UNTIL THIS PUSHES HAND OVER 21, AT WHICH POINT EACH WILL BE EVALUATED AS A 1.

Operating Limits and Warnings

DO NOT USE THIS SPACE

BLACKJACK

LVL A	FØ ?	GTO 2	1	GTO e	
E	GTO D	LBL 7	Ø	LBL d	
2	LBL 3.	2	-	x-y	
STO A	2	1	STO 1	RCL Ø	
RTN	1	RCL 1	1	E	
LVL C	RCL 1	x > y	STO -3	2	
STO C	x > y	GTO 8	GTO Ø	x	
Ø	GTO 4	GSR 6	LBL	x-y	
x-y	RCL Ø	GTO c	RCL B	+	
x ≤ y 10	RTN 50	LBL 6 90	π 130	STO Ø 170	210
RIN	LBL 4	RCL 1	+	LST X	
x-y	RCL 3	E	5	RCL 1	
STO Ø	x > Ø	2	y*	+	
STO 1	GTO 6	÷	FRAC	1	
STO 2	RCL Ø	RCL 2	STO E	Ø	
STO 3	-x-	+	.	x-y	
CF Ø	RCL 1	DSP 2	Ø	F2 ?	
GSR a	PAUSE	-x-	7	+	
GSR a	RCL 1	DSP Ø	6	STO 1	
RTN 20	PAUSE 60	RTN 100	9 140	RCL Ø 170	220
LVL E		LBL c	2	RTN	
RCL 1		RCL 1	3	LVL c	
STO 2	LBL 5	RCL 2	1	1	
Ø	RCL A	x ≤ y	÷	STO +3	
STO Ø	RCL C	GTO 5	!	SF 2	
STO 1	-	LBL 9	+	GTO d	
STO 3	STO A	RCL A	INT	LBL B	
SF Ø	RTN	RCL C	!	F3 ?	
GSR a	LBL 6	+	Ø	GTO e	
LBL D 30	RCL 1 70	STO A 110	÷ 150	1 170	
GSR a	1	RTN	!	e*	
FV ?	Ø	LBL 8	x-y	LBL c	
-x-	-	RCL 3	x > y	STO B	
LBL Ø	STO 1	x > Ø	1	RCL A	
RCL 1	1	GTO Ø	ENT ↑	RTN	
1	STO -3	Ø	1		
7	GTO 3	GSR 6	Ø		
x ≤ y	LBL 1	GTO 9	x		
GTO 1	FØ ?	LBL Ø	1		
LBL 2 40	GTO 7 80	RCL 1 120	x = y 160		

LRLS

0	✓✓
1	✓
2	✓
3	✓
4	✓
5	✓
6	✓
7	✓
8	✓
9	✓
A	START
B	END
C	→ 100%
D	1117
E	TRAIL
a	"CARD" SUB
b	✓
c	✓
d	✓
e	✓✓

STORAGE

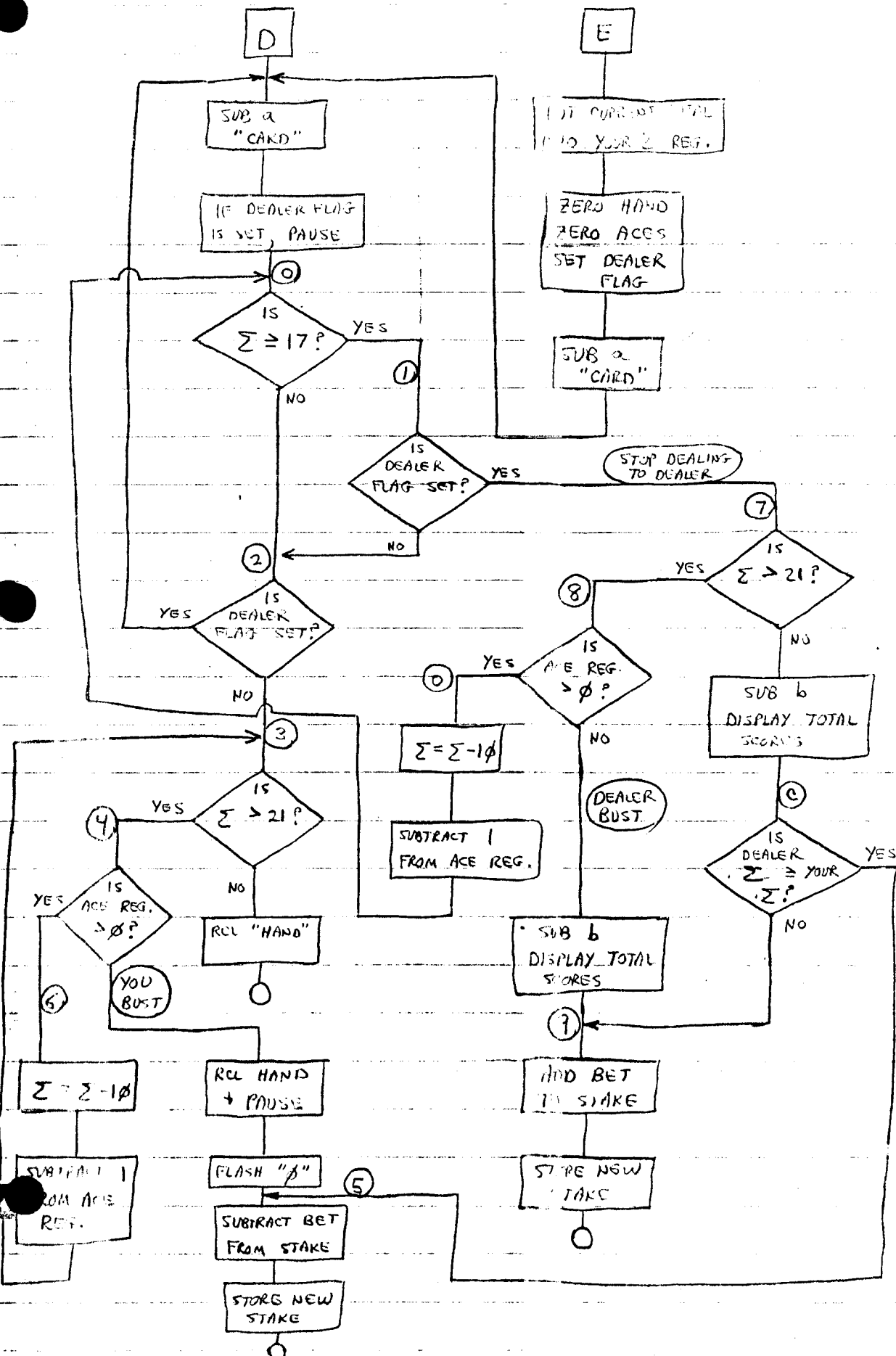
0	HAND
1	CURRENT Σ
2	PLAYER Σ
3	ACE COUNTER
4	
5	
6	
7	
8	
9	
A	≠ POOL
B	RANDOM #
C	BET
D	
E	
I	

CLEAR
FØ - DEALER FLAG
F2
F3

DSP Ø
DEG.

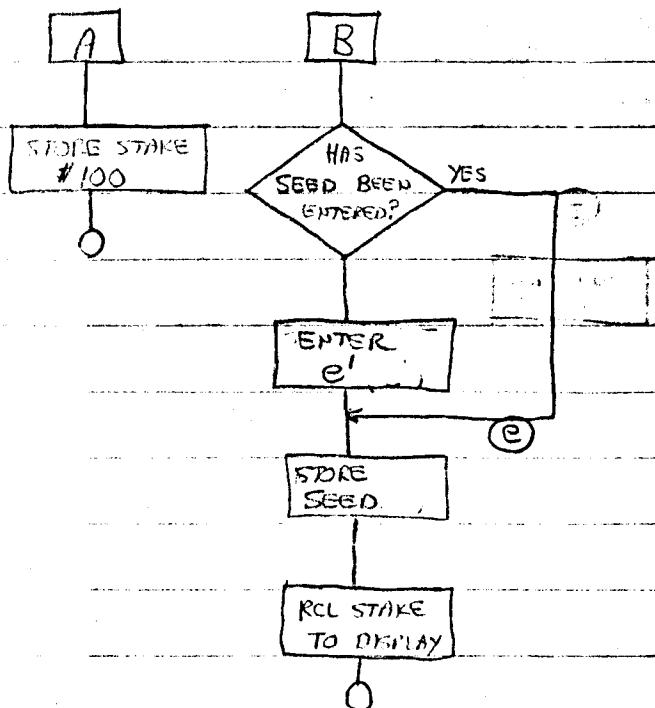
HIT

STAND

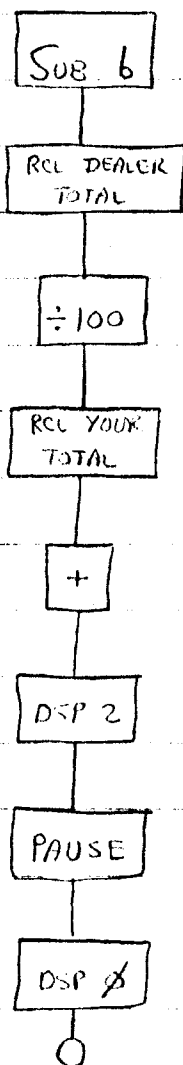
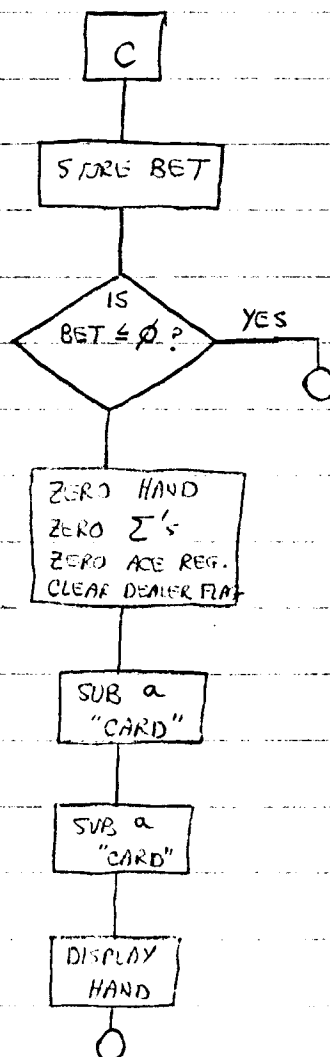


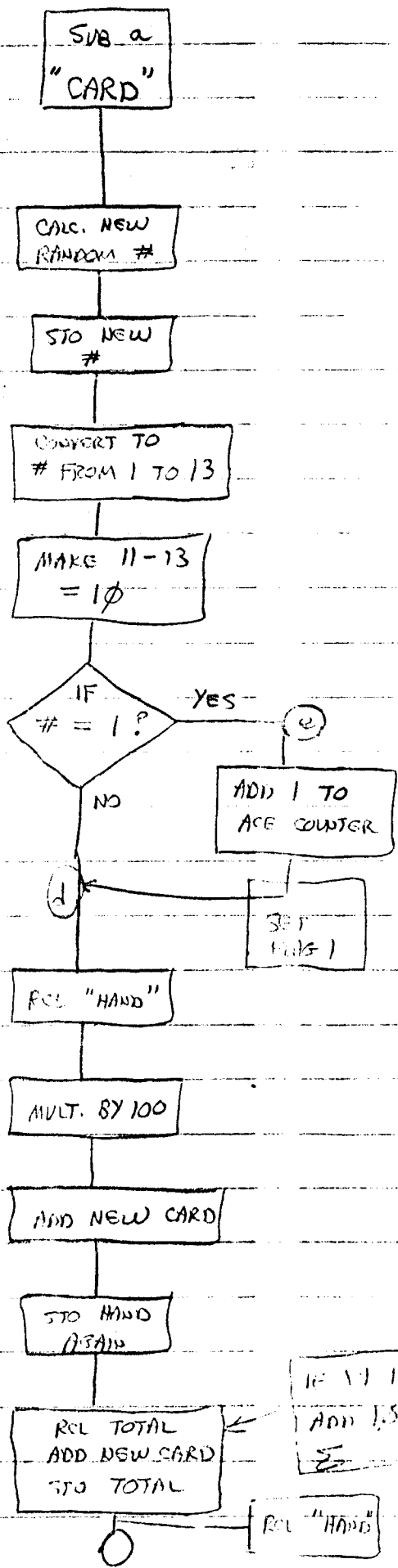
START

SEED



BET → DEAL





$$\begin{array}{r} \checkmark \\ (51.82)^2 \\ 1-1 \quad 121 \end{array}$$

x100
INT
÷10000
FRAC

769.1538467
769.2
0 = 1111
0 = 12.1111
1 = 13.1111
1 = 13

1
N
10
SUM

N
1